
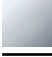
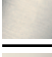





20 700 370



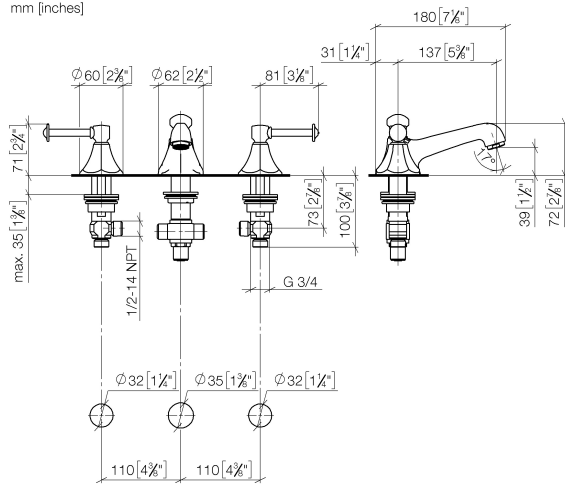
- 135mm projection
- fixed spout
- circular, air-enriched flow
- height of mixer 72 mm
- height up to aerator 40 mm
- hole diameter valve 32 mm
- hole diameter spout 35 mm
- without rosette
- 2x 1/2" x 1/2" high pressure hose
- max. flow 7 l/min
- lead-free
- This product can help a building meet the requirements of Green Building Rating Systems, e.g. LEED®, BREEAM®, DGNB

Only suitable for basins with an overflow.

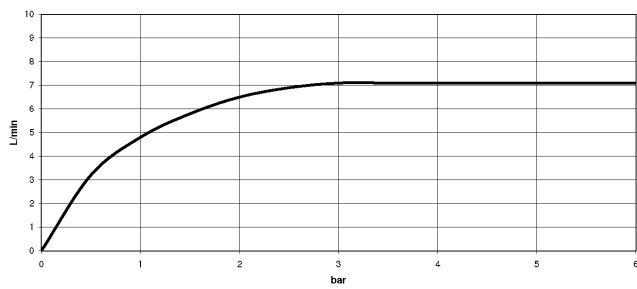
	Durabross (23kt Gold)	20 700 370-09
	Chrome	20 700 370-00
	Brushed Platinum	20 700 370-06
	Platinum	20 700 370-08
	Brushed Durabross (23kt Gold)	20 700 370-28
	Brushed Dark Platinum	20 700 370-99

20 700 370

mm [inches]



Flow rate chart



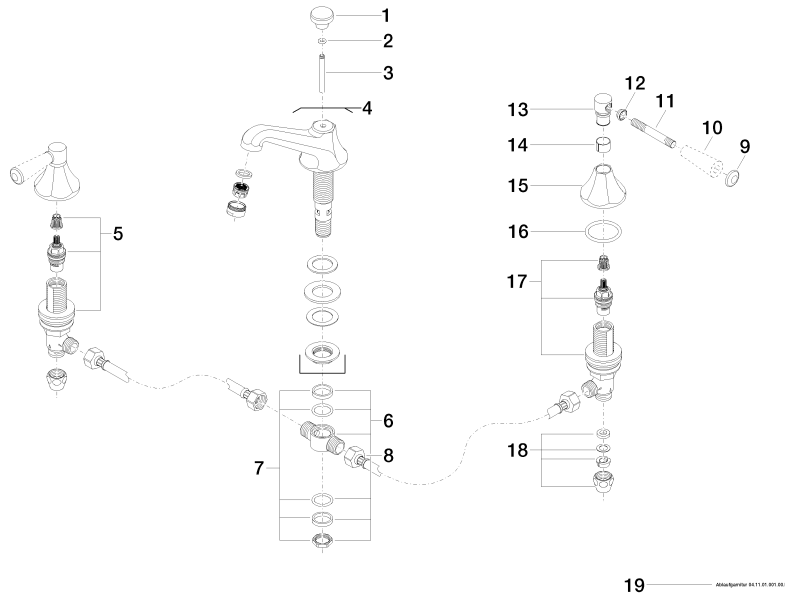
Certificates

GDV_0400288.

LGA_8027.

20 700 370

Parts for other finishes can be found here: [Chrome](#)



Spare parts list

No.	Item Number	Name	Quantity used	Delivery time
1	09 20 36 030-09	handle	1	40
2	90 14 10 062 00 90	seal	1	2
3	09 31 09 004-09	pull-rod	1	40
4	13 700 380-09	spout	1	40
5	90 17 11 040 51 90	side panel	1	2
6	90 17 11 020 10 90	distributor	1	2
7	90 23 10 012 00 90	gasket kit	1	2
8	04 30 04 096 00 90	hose	2	2
9	09 30 30 062-09	screw	2	40
10	11 170 370-09	MADISON Lever insert - Durabronz (23kt Gold)	2	40
11	09 28 22 013 90	pipe	2	2
12	09 20 37 001-09	handle	2	40
13	09 20 82 000-09	handle	2	40
14	90 18 40 041 00 90	sleeve	2	2
15	09 27 37 014-09	rosette	2	40
16	90 14 10 043 00 90	seal	2	2
17	90 17 11 040 50 90	side panel	1	2
18	90 23 30 040 00-09	threaded connector	2	40
19	90 11 01 001 00-09	pop-up waste	1	40